



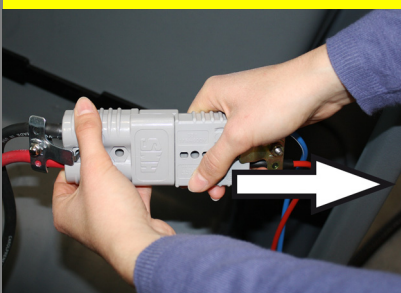
Warning

These are only brief instructions! Please read and comply with these instructions prior to using or servicing your appliance.

The non-compliance of the operating and safety instructions may lead to damages of the appliance and to dangers for the operator and other persons.

Start up

1

A

B


A Pull the battery cable from the charger cable and connect it to the appliance plug.

B Tilt the battery cover towards the front and tighten the locking screw.

2

A


A Open the cover of the fresh water reservoir. Fill in fresh water (maximum 60 °C). Leave sufficient space for the detergent.

3

A

B


A Pour in detergent. Close the cover of the fresh water reservoir.

B Open fresh water valve.

Operation

1

A

B


Starting the machine

A Step on the standing platform.

Do not press the accelerator pedal.

B Release emergency-stop button by turning.

C Set main switch to "1".

C


Operation

2



Drive forward

- A Set the forward drive direction using the drive direction button at the operator console.
- B Set the speed range on the programme selection switch.
- C Press accelerator pedal down slowly. Release the accelerator pedal, the machine brakes automatically and stops.



3



Reverse drive

- A Set the drive direction to backwards using the drive direction button at the operator console.
- B Set the speed range on the programme selection switch.
- C Press accelerator pedal down slowly. Release the accelerator pedal, the machine brakes automatically and stops.



4



Scrubbing vacuum Eco mode

- A Light cleaning intensity
Wet clean the floor and vacuum up dirt water.

5



Scrubbing suction

- A Medium cleaning intensity
Wet clean the floor and vacuum up dirt water.

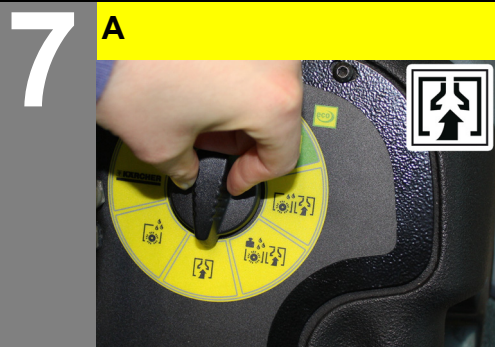
6



Scrubbing suction

- A High cleaning intensity
Wet clean the floor and vacuum up dirt water.

Operation



Vacuuming

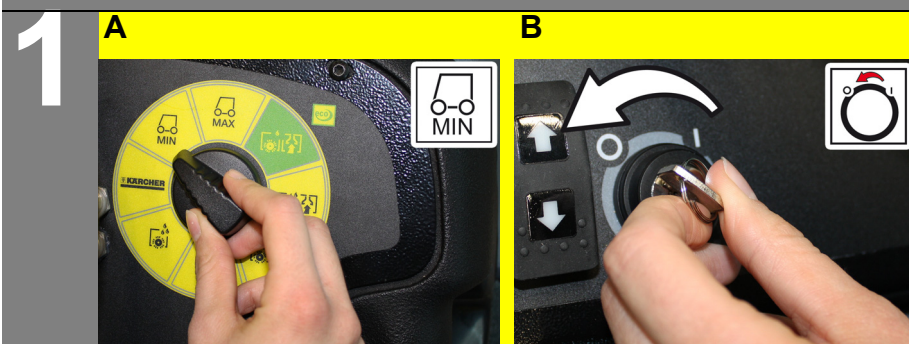
A Vacuum the wastewater.



Apply detergent solution

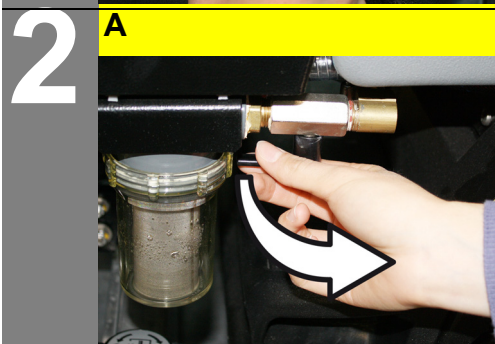
A Apply detergent solution to the severely contaminated surface and let it soak in.

Finish operation



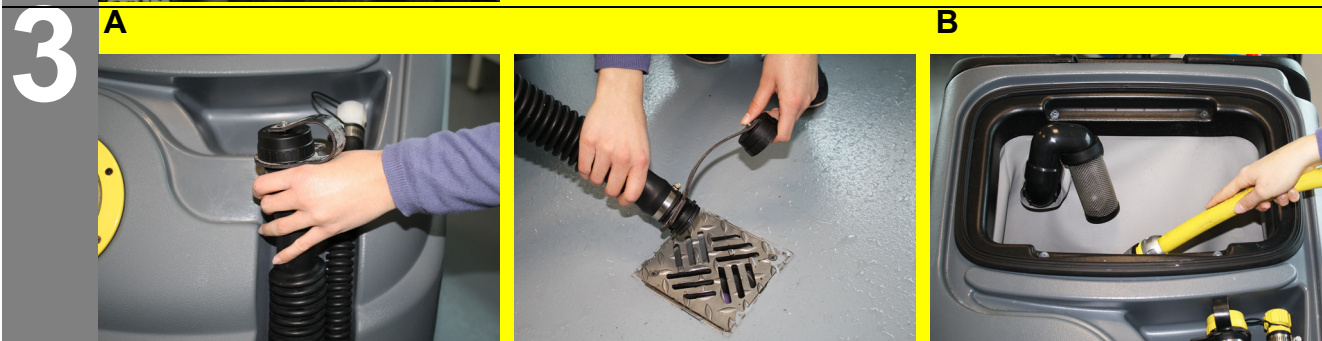
Turn off the appliance

A Set programme switch to step 1 (driving).
B Turn key to "0" and remove it.



Turn off the water supply

A Close the fresh water valve.



Emptying the Dirt Water Reservoir

⚠ Warning

Please observe the local provisions regarding the wastewater treatment.

A Take the water discharge hose from the support and lower above a suited collection device.
B Then rinse the dirt water tank with clear water.

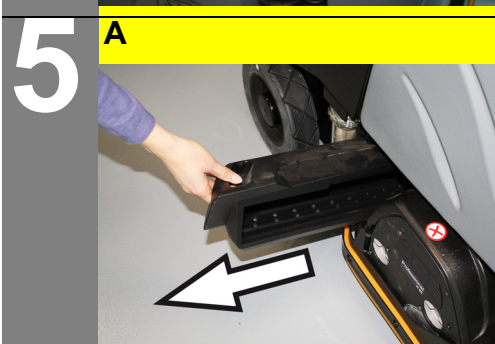


Emptying the Fresh Water Tank

⚠ Warning

Please observe the local provisions regarding the wastewater treatment.

A Take the water discharge hose from the support and lower above a suited collection device.
Rinse the fresh water tank with clear water (max. 60°C).



Emptying waste container

A Empty the waste container and rinse with water.

Maintenance and care

daily

weekly

Kärcher Customer Service

1



⚠ Warning

Please observe the local provisions regarding the wastewater treatment.

- A Take the water discharge hose from the support and lower above a suited collection device.
- B Then rinse the dirt water tank with clear water.

2

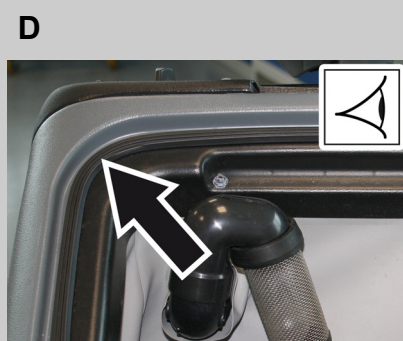
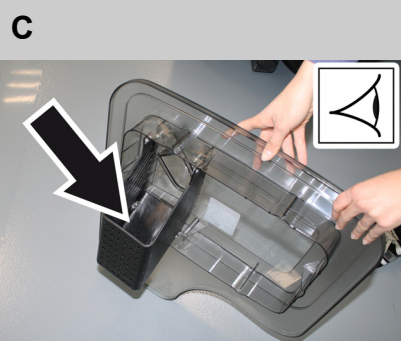


⚠ Warning

Please observe the local provisions regarding the wastewater treatment.

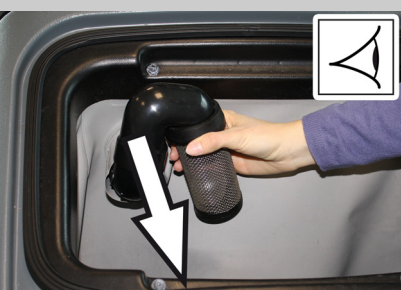
- A Take the water discharge hose from the support and lower above a suited collection device. Rinse the fresh water reservoir with clear water (max. 60°C).

3






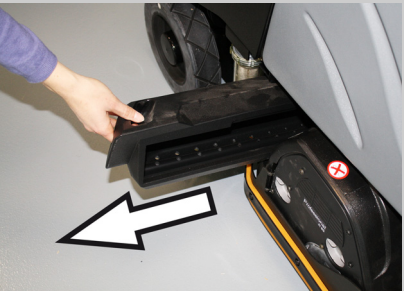
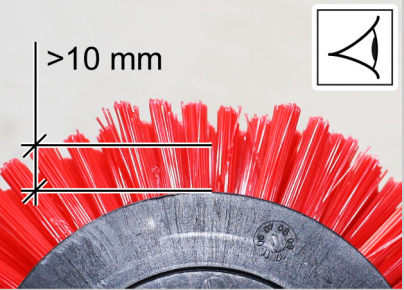
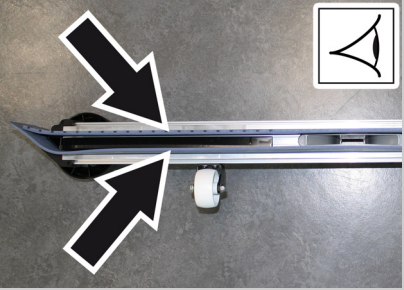
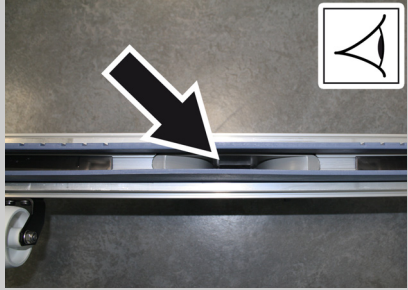

- A Pull off the suction hose.
- B Remove the cover from the waste water reservoir.
- C Clean the sieve in the lid of the dirt water tank.
- D Check the lid of the dirt water tank for tightness.

4


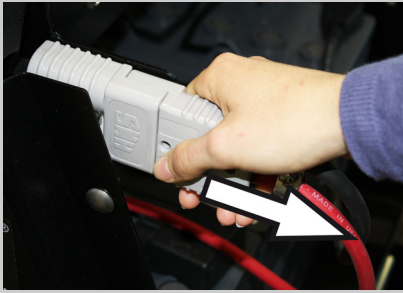
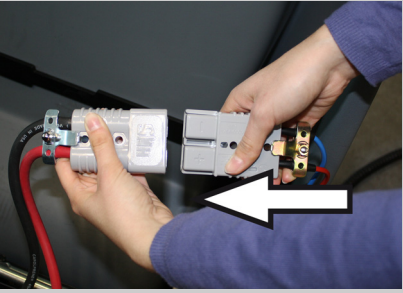


- A Check and clean the waste water reservoir sieve.

Maintenance and care

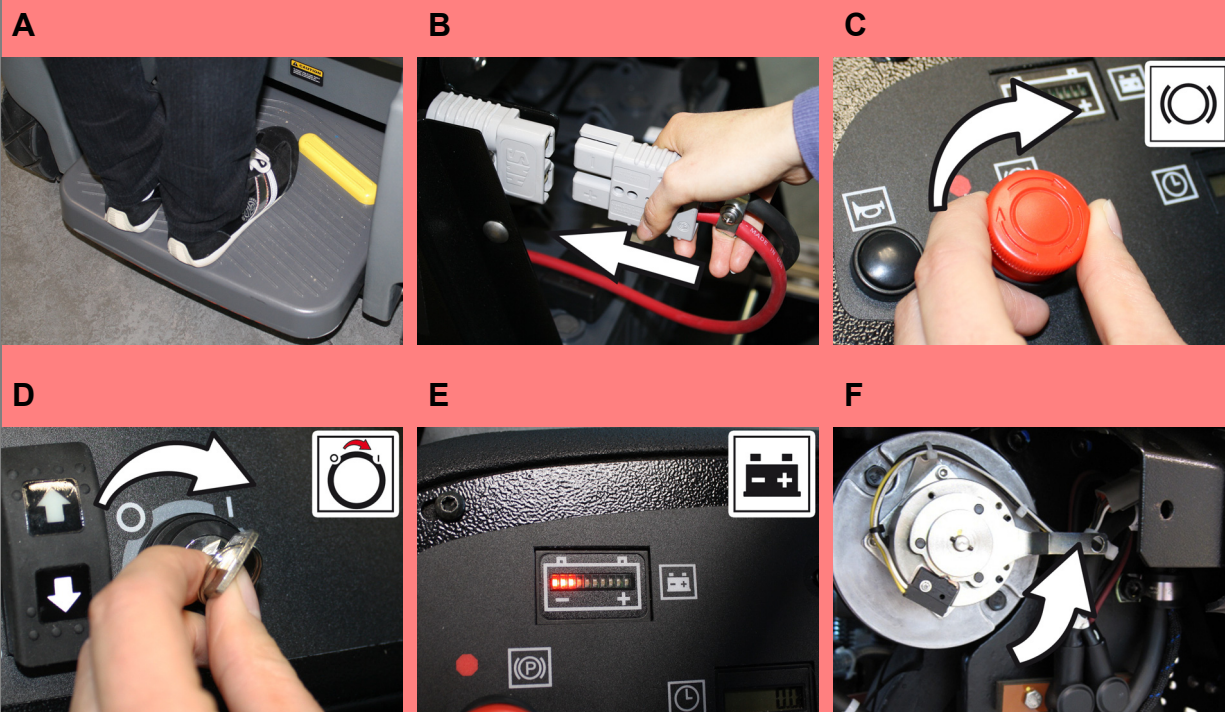
			daily	weekly	Kärcher Customer Service	
5	A	 	A	A Check fresh water filter; clean if required.		
						
6	A		A	A Empty the waste container and rinse with water.		
7	A		A	A Check the brushes for wear (bristle length at least 10 mm), replace if required. Check brushes for wear and tear, clean.		
8	A		A	A Clean vacuum lips in the vacuum bar and check for wear.		
	B		B	B Clean the suction channel.		
9	A		A	A Clean the outside of the appliance with a damp cloth which has been soaked in mild detergent.		

Maintenance and care

		daily	weekly	Kärcher Customer Service
1 0	<p>A</p>  <p>B</p> 	<p>A Charge battery. Open the lock. Tilt the battery cover backwards.</p> <p>B Remove battery plug and join it to the charging cable. Connect the charger to the mains and turn it on.</p>		
				
1 1	<p>A</p>	<p>A Maintenance to be carried out every 200 operating hours</p>		

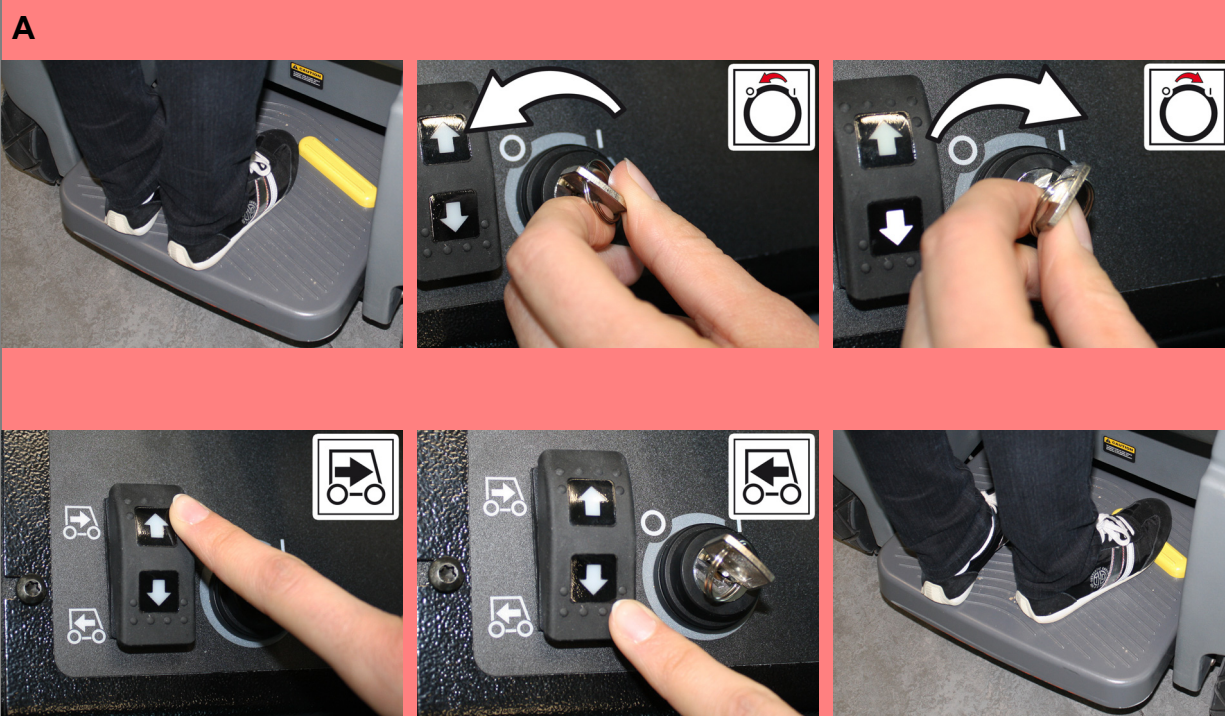
Troubleshooting

1



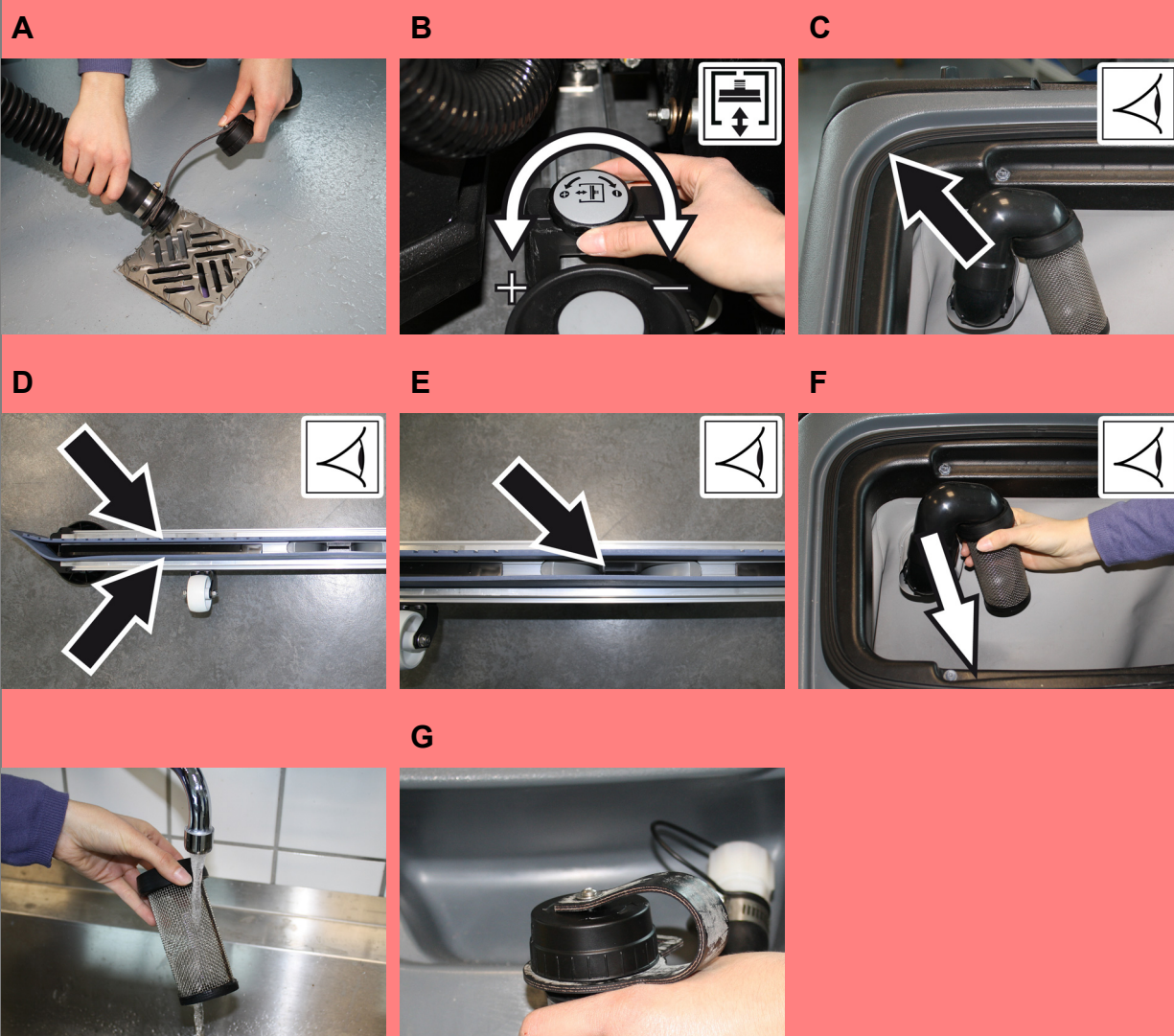
- Appliance cannot be started
- A Step on the standing platform. Do not press the accelerator pedal.
 - B Insert the battery plug on the device.
 - C Release emergency-stop button by turning.
 - D Set main switch to "1".
 - E Battery depleted. Charge battery.
 - F Close the solenoid brake. To do this, press the lever of the solenoid brake all the way up to the stop.

2



- Device does not drive or drives only slowly
- A Release accelerator pedal, turn the key switch to "0", turn the key switch to "1". Set the travel direction switch to "forward" or "reverse". Actuate the accelerator pedal.

3

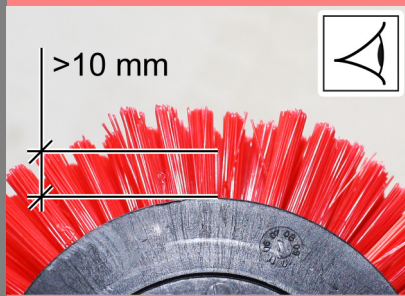


- No or inadequate suction power
- A Empty the dirt water reservoir.
 - B Check the setting of the vacuum bar.
 - C Clean the seals between dirt water reservoir and top of the appliance and check for leaks, replace if required.
 - D Clean the vacuum lips on the vacuum bar, turn or replace if required
 - E Check suction hose for blockages; clean if required. Check connection between suction hose and suction bar and suction hose and wastewater tank.
 - F Check and clean the waste water reservoir sieve.
 - G Install a cover onto the wastewater drain hose.

Troubleshooting

4

A



Insufficient cleaning result

- A Check the brushes for wear (bristle length at least 10 mm), replace if required.
- Check brushes for wear and tear, clean.

5

A



Brushes do not turn

- A Reset fuse of brush drive.
- Check the brushes for blockage due to foreign particles, remove them if found.

6

A



B



No or very little detergent solution gets added

- A Open fresh water valve.
- B Check level of detergent solution in the fresh water tank; refill, if required.

7

a

The cleaning head does not remain lowered.

- A Install the brushes.